

Fronius inverter showing offline in SolarWeb? What to do now.

Often People will ring our office and express their concern as to why they're Fronius inverter is showing as "Offline" in SolarWeb. In most cases, this is a simple internet connection issue... not the inverter on the way out.

The first thing to do when you notice your Solar System showing "Offline" is to check your inverter itself. During the day, you should be able to see a solid Green LED next to the display. The display should also show a read out of what power is currently being generated. If you notice an Orange or Red LED during the day, not after sun down, it means no solar is being produced or a possible fault. It is best to give us a call in this case.

After checking your inverter and confirming the solid green LED, you may want to try to reconnect your inverter back to the internet. **Attached below is a link for an instructional step by step video on how to do this.** Most historical data will be re-uploaded to SolarWeb once a solid connection is established.

<https://www.youtube.com/watch?v=HKdXLEbyNRI>

Steps on reconnecting

You will need to connect your Smartphone, Tablet or Laptop to the inverters WIFI access point. To do this you will need to press the following buttons under the inverters display-

1. Press the second button from the **right** to bring up menu icons



2. Press the third button from the **right** to slide across to the "SETUP" icon



3. Press the first button on the **right** to select "SETUP"



4. Once you are in the "SETUP" menu, press the third button from **right** to scroll down to "WIFI Access Point"



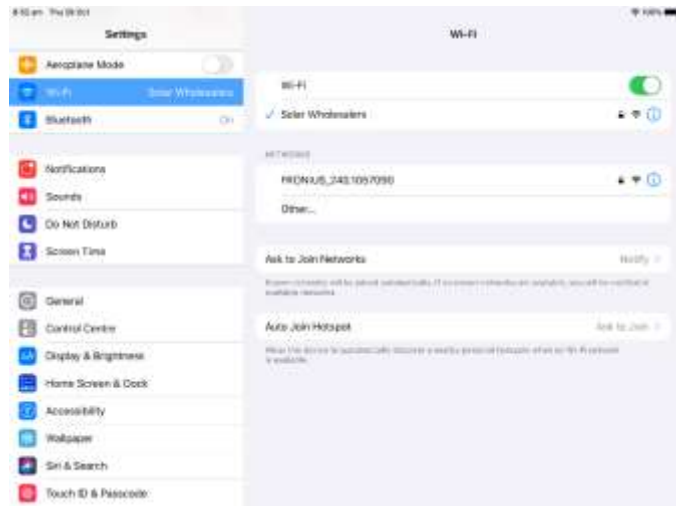
5. Press the first button from the **right** to select "WIFI Access Point"



6. Press the first button from the **right** again to "Activate WIFI AP".

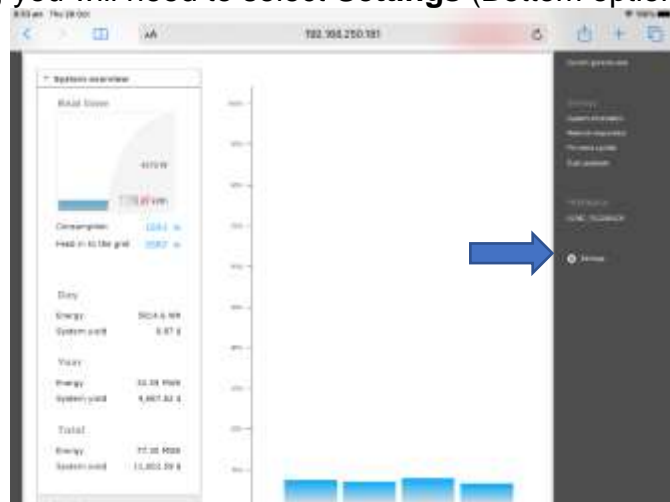


Now you have the WIFI Access Point Active, you will need to go into **WIFI Settings** on your device and **connect to Fronius 240.xxxxxxx**. The password is **12345678**

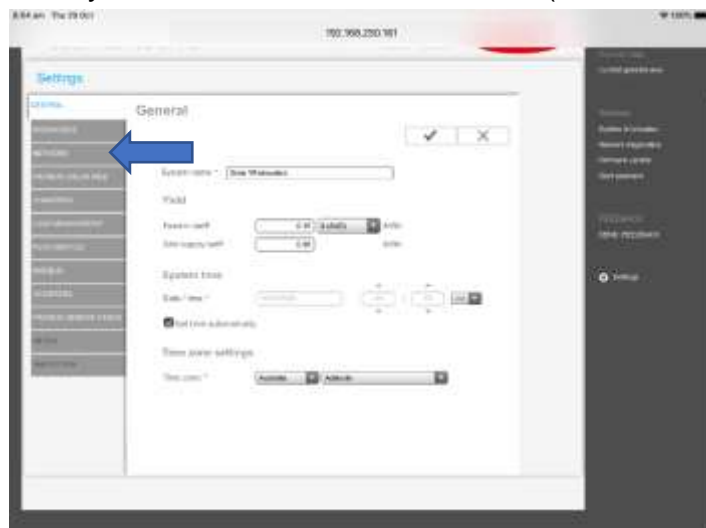


Once your device has successfully connected to Fronius, you will need to open your internet browser and search an IP address **192.168.250.181**

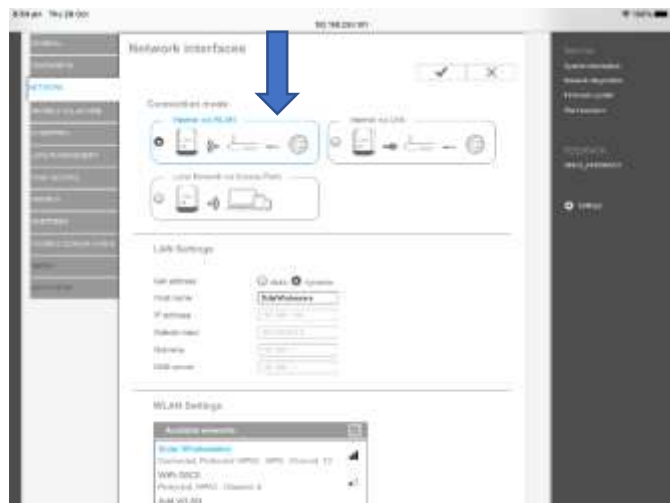
After you have loaded this webpage, you will need to select **Settings** (Bottom option located on the right side of the screen)



This will take you to a new screen, here you will need to select **Network** (Third option on the left side of the screen).



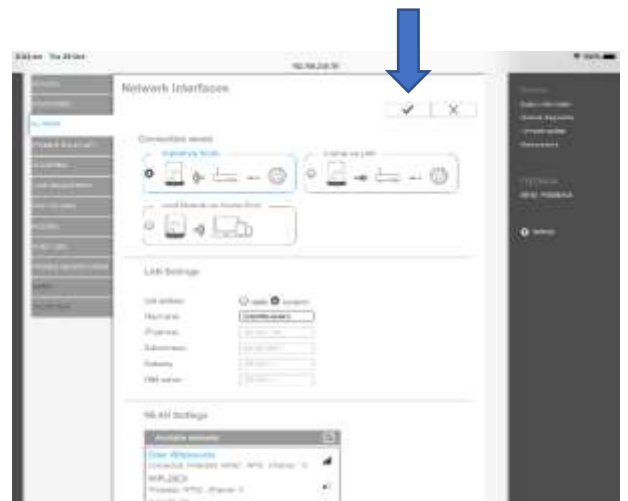
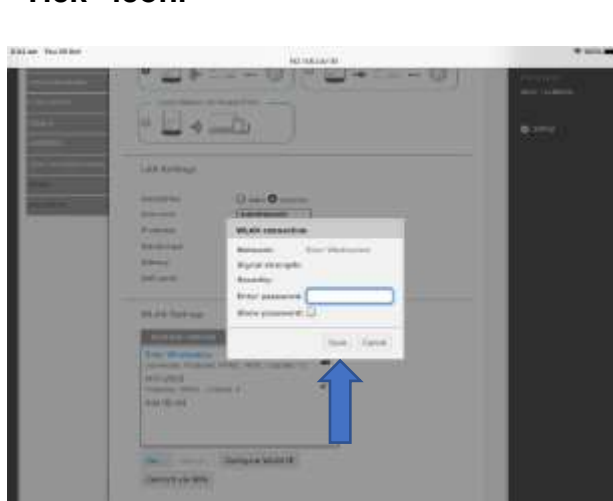
If your inverter is connected via WIFI, make sure the **WLAN** option is selected and scroll down to **Available Networks**.



Here you should find your Network name. Press your **Network name** then press **Set**.



You will be prompted to enter your **Password**. After completing your password and double checking it is correct, press **save** then scroll back to the top and **press the "Tick" icon**.



The inverters WIFI Access Point will automatically turn off as there are no more steps required. The inverter screen will shortly go back to normal and your device will automatically disconnect from the inverter.

If all steps are properly completed, your SolarWeb monitoring will shortly return to how it originally was.